



Genesys Logic, Inc.

Genesys Backup Manager

Application Notes

Release Date: Apr. 14, 2008

Index

1. Declaration.....	3
2. System requirement	4
3. Standard User Interface	5
4. User Guide	7

1. Declaration

- Genesys Backup Manager (the application) is developed solely by Genesys Logic Inc. (the company). The product is a software application designed to provide a fast and easy way to master external hard drive. The goal of the product is to improve end-user experience when using the company's external storage solutions.
- The application is only compatible to the company's IC solutions including GL811E, GL811S, and GL830.
- The application is complementary and should be deemed as a value added feature. System developers must carefully evaluate and approve the application before mass production. The company is not accountable for any damage or liability result from the application.
- Minimal customization to the standard user interface is available at the company's discretion. System vendor is allowed to integrate its company logo or brand name into the standard user interface.
- The company reserved the right of licensing and distributing the product. Use of the product without written consent from the company is strictly prohibited.

2. System requirement

- Intel® Pentium® 4, Intel Centrino®, Intel Xeon®, or Intel Core™ Duo (or compatible) processor or 100% compatible H/W system.
- Microsoft® Windows® 2000, XP or Windows Vista™ Home Premium, Business, Ultimate, or Enterprise (compatible with both 32/64-bit editions)
- 32MB RAM is recommended
- Image resolution 800 x 600 pixel or above
- USB to PATA bridge controller (GL811E, GL811S) and USB to SATA bridge controller (GL830)
- Support FAT32 & NTFS file system

3. Standard User Interface

- Genesys Backup Manager enables stylish user interface that will greatly enhance end customer's user experience. System vendor's company logo can be shown on the left side of the upper bar. Well organized functional pages simplified the backup steps comparing to traditional applications as Fig 3.1. To add more attractions, the application empowered end user to choose his or her favorite color for the utility's outlook as Fig 3.2.

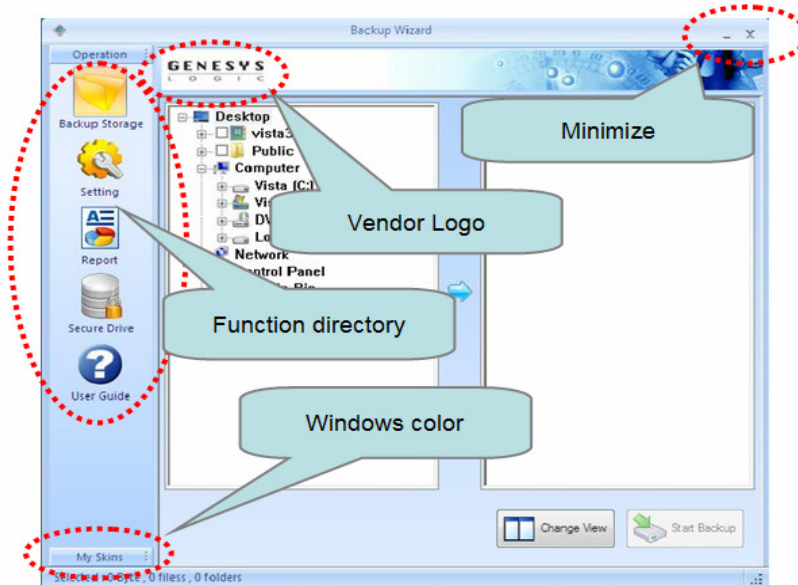


Fig 3.1

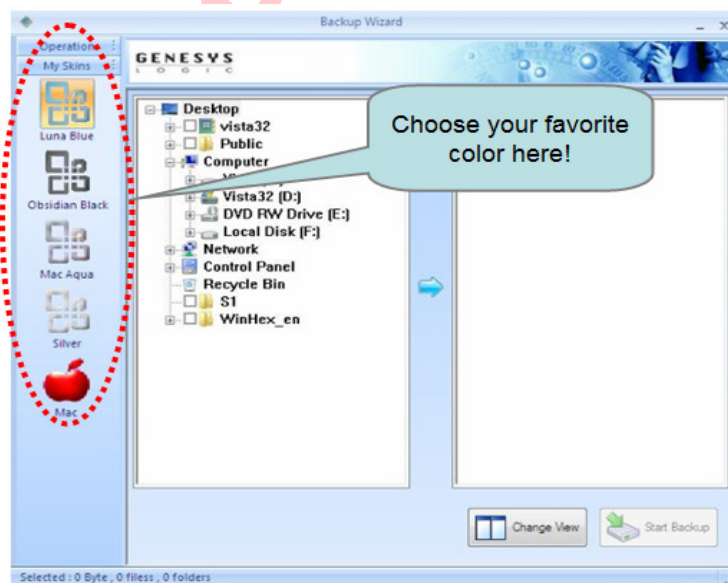


Fig 3.2

- Vendor is encouraged to add its product name or brand name in the splash for marketing purpose. The splash shows in the program initiation stage before the application window pop up as Figure 3.3. Also, system vendor can show its own logo in the windows tool bar as Fig 3.4.



Fig 3.3

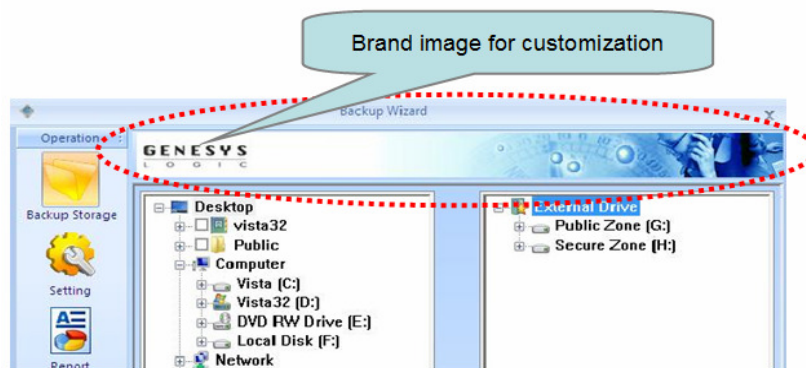
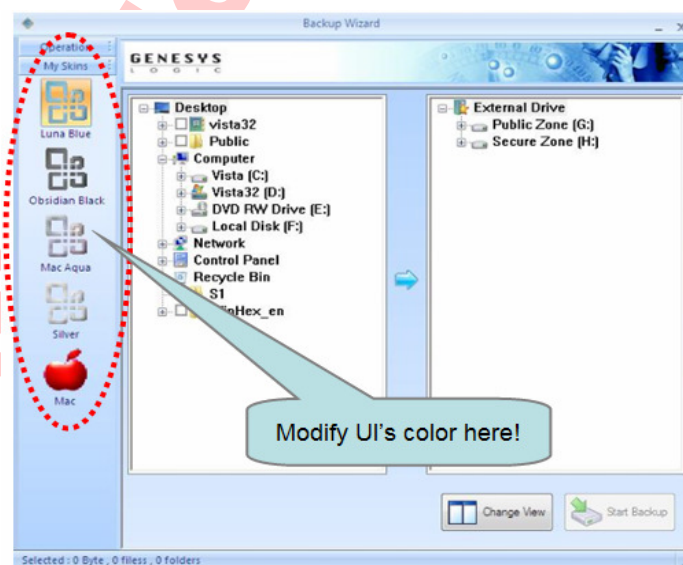
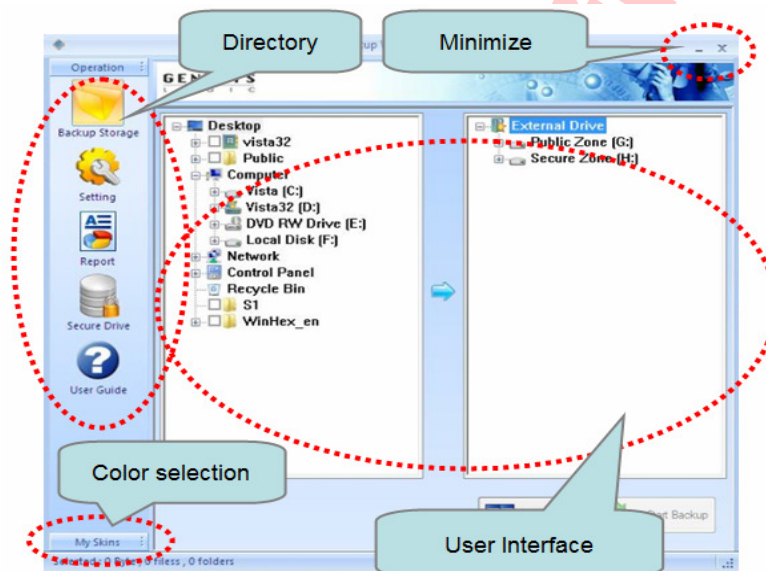


Fig 3.4

4. User Guide

● Introduction

Backup Manager is a user friendly application for backing up files onto your external USB hard drives. You may set up the options and press the button on the device to run archives. It will copy all the selected files from the hard disks on your computer to the external USB disk drive. The program will keep the records of the backup events. It requires the specific USB hard disk device to activate some of the functions. For example, you can not select destination path if there is no proper USB hard disk.



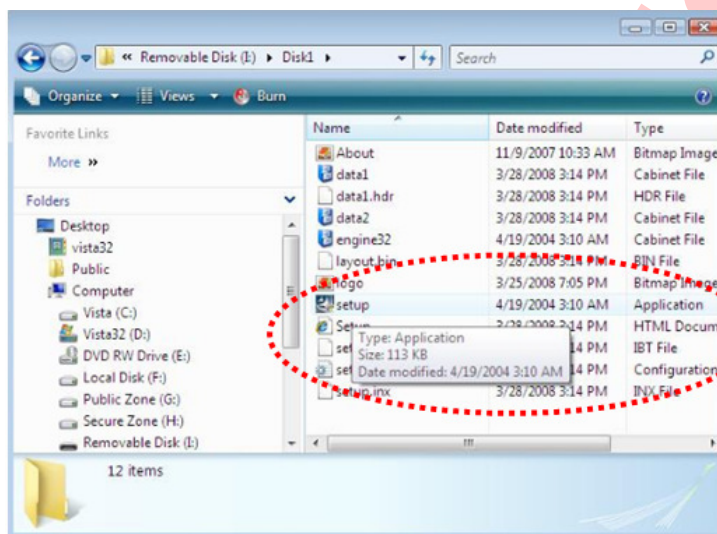
● ***Steps of Installation***

(1) Connect

Connect your external hard drive to USB port

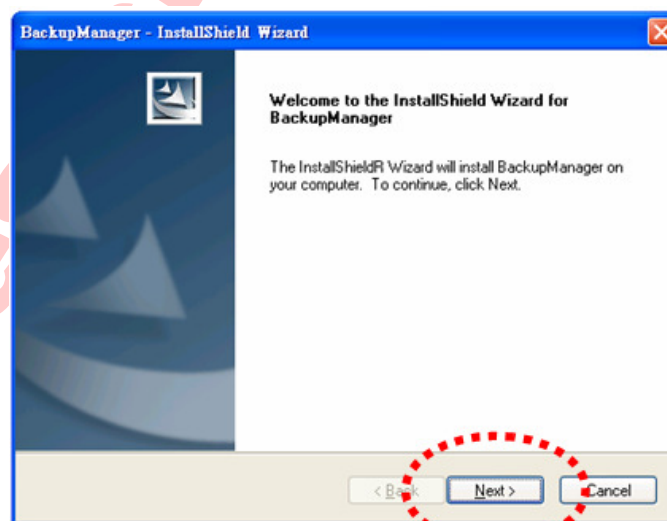
(2) Run Setup

Input CD to start auto run. If the auto run does not initiate, simply double click setup.exe to start install shield



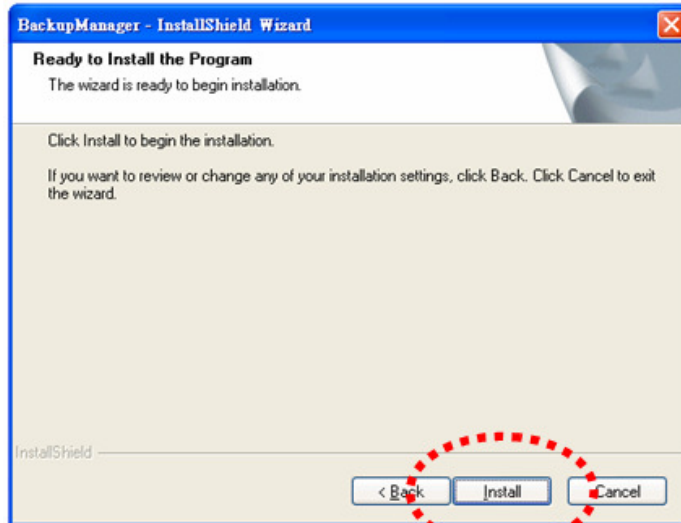
(3) Initiate Wizard

Installation shield start running the setup wizard Click “Next” to continue



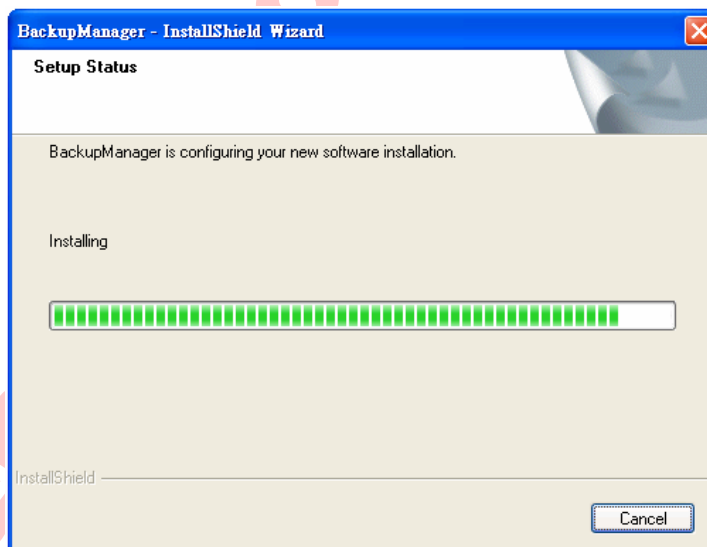
(4) Prepare for Installation

Verify system requirement and get ready for installation. Click “Install” to continue



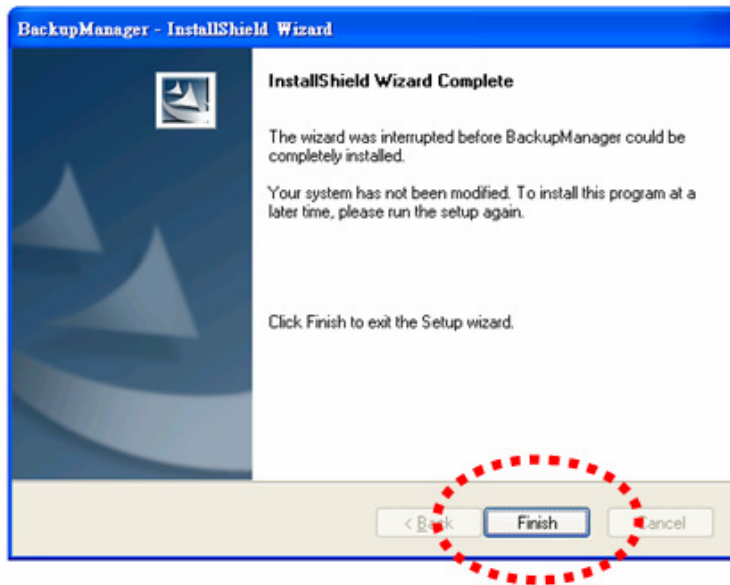
(5) Start installation

This step may take a few seconds. Press “Cancel” to exit.



(6) Complete

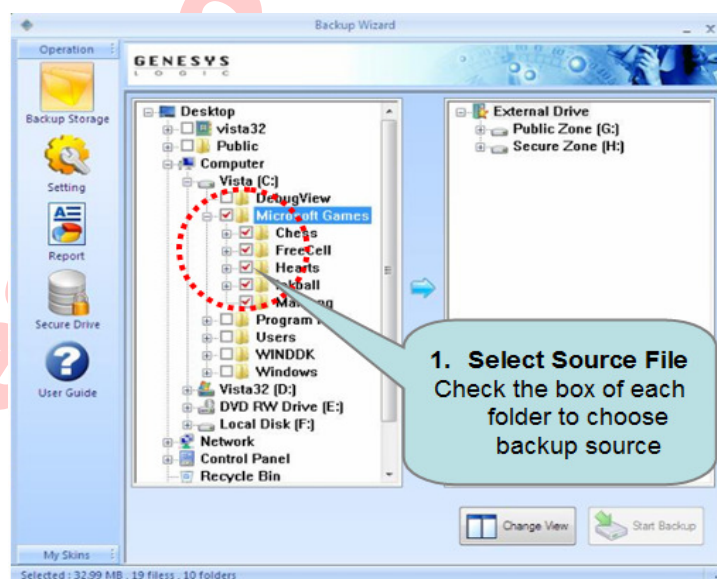
Installation completed. Press “Finish” to exit



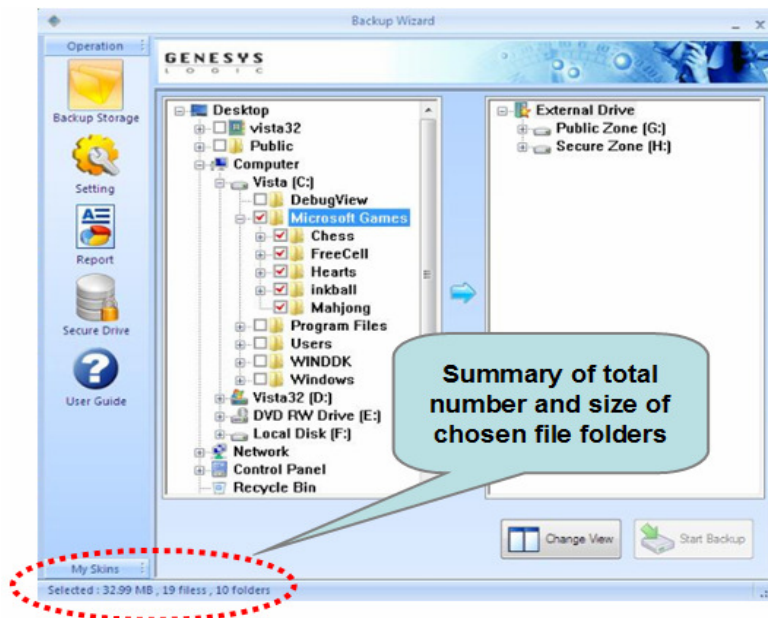
● ***File backup Functions***

(1) Setup source path

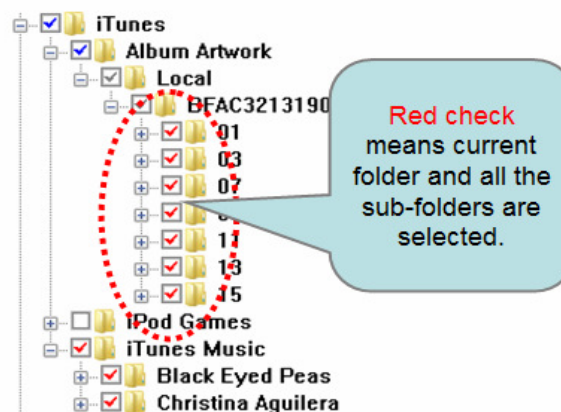
- ✓ Click left-side boxes to select the folders or files you would like to back up to your external drive. The application will copy all the selected files from the hard disks on your computer to the external USB disk drive.

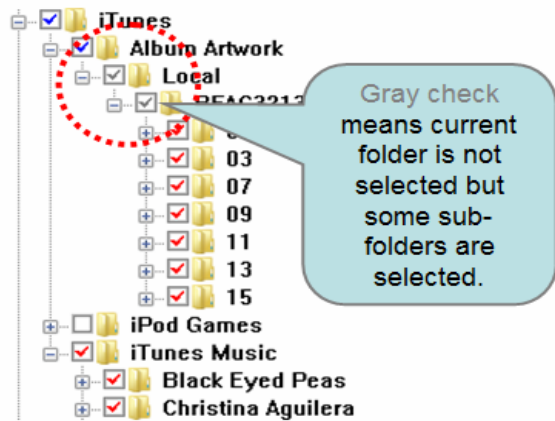
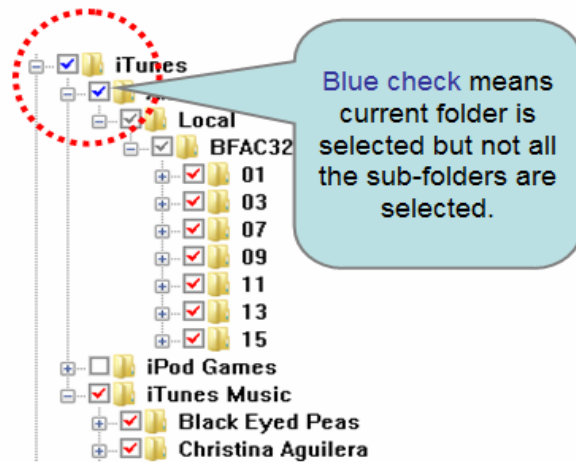


File size and number of selected folder and subfolder are summarized at the lower left of the UI window.



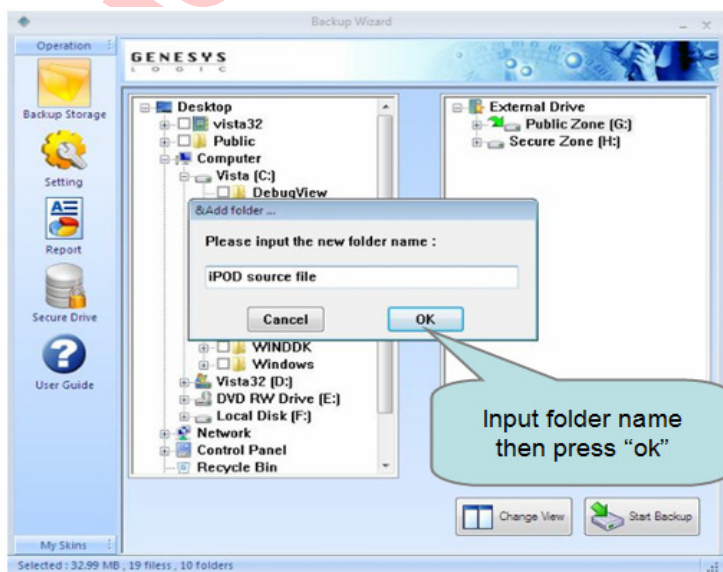
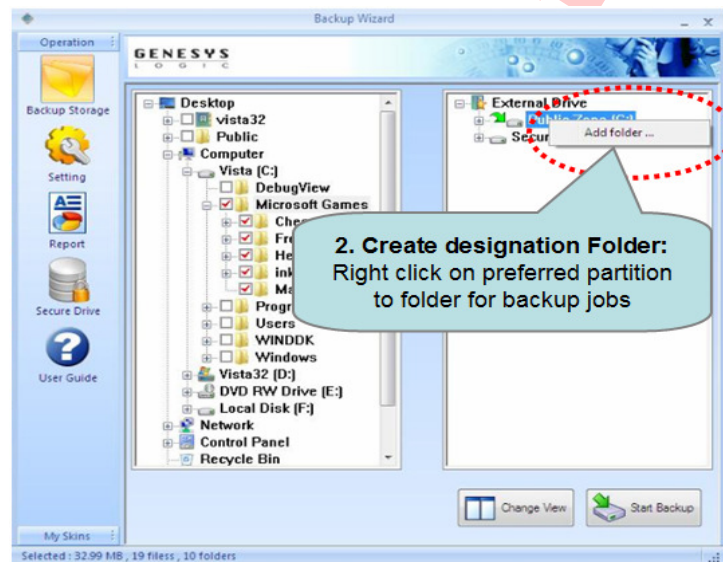
- ✓ A check mark means the folder is selected. The color of the check mark has different meaning, as follow:





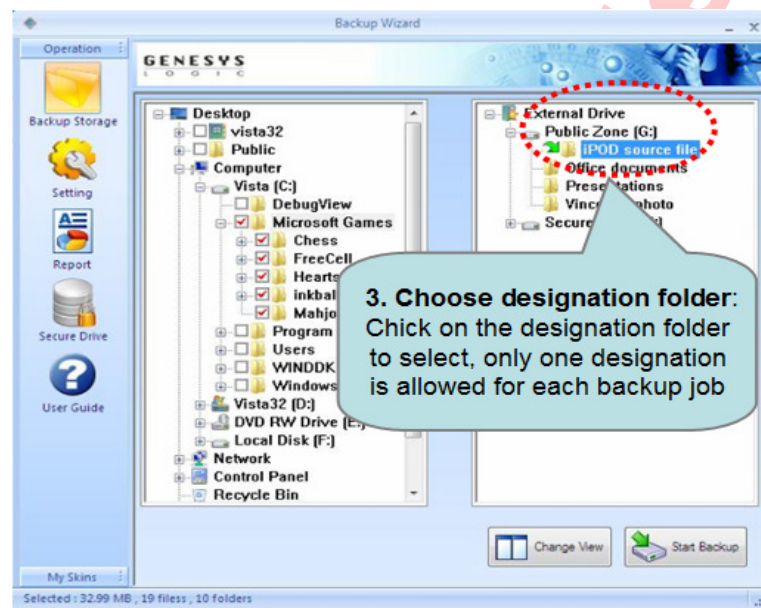
(2) Create the designated folder

Genesys Backup provides basic file system management function similar to Microsoft windows file organizer so users do not need to open any separate window to create new folder before the file backup or delete undesired folders after one. Simply navigate your mouse indicator on to the desired disk partition then right click, a selection button will emerge from the background for adding new folder or removing existing folder. To create new folder, press on “Add folder” button then input folder name on the pop-up window. On the other hand, all created folders can be removed by pressing on “Delete folder” button.



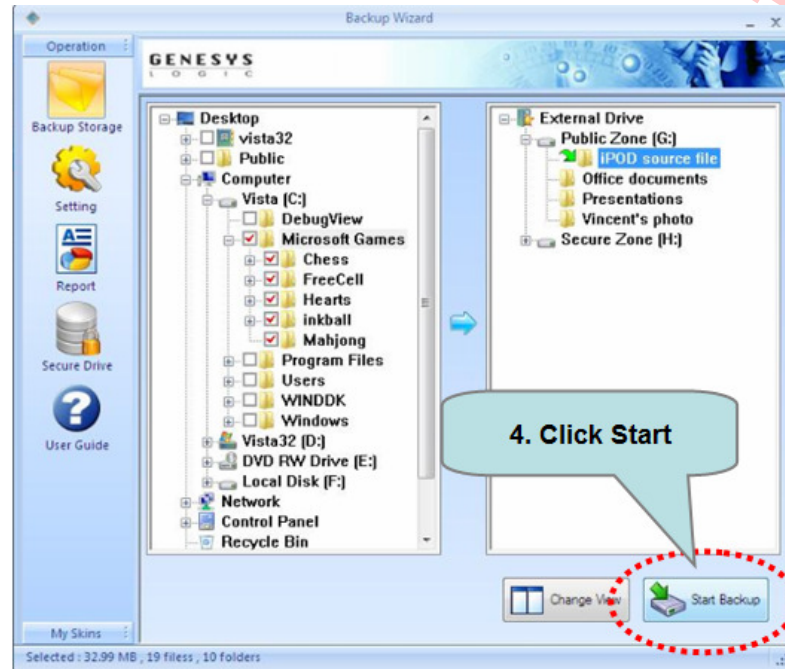
(3) Select the designated folder

Simply click the folder in your external hard drive that you would like to store the backup files. A tree view folder is displayed for selection but there is no check box for multiple selections. For you can decide one destination path for the archives. This function is grayed out if there is no proper USB hard disk.



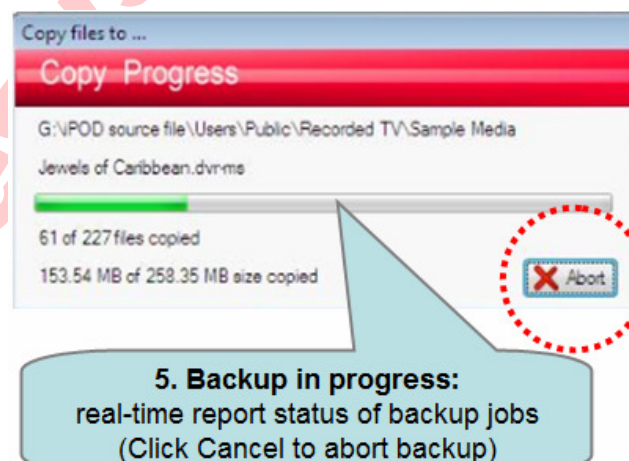
(4) Start the file backup

After source file and designation folder are selected properly. The backup job is ready to go! Click “Start Backup” button to proceed.



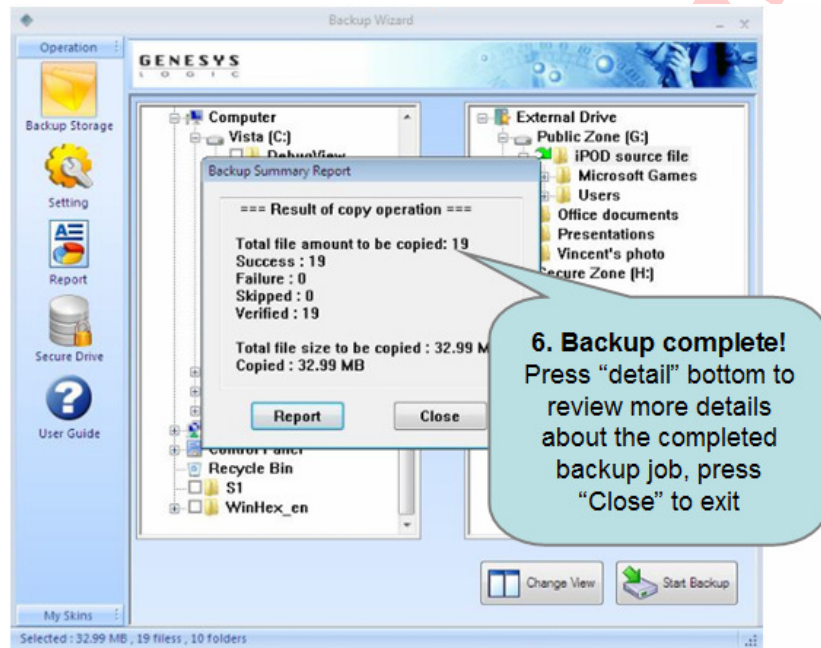
(5) File backup started

File backup started. File copy status and schedule are shown on a separated window. Under this stage, you can not start another file backup job until current 100% completed. You may click “Interrupt” anytime to abort the backup job.

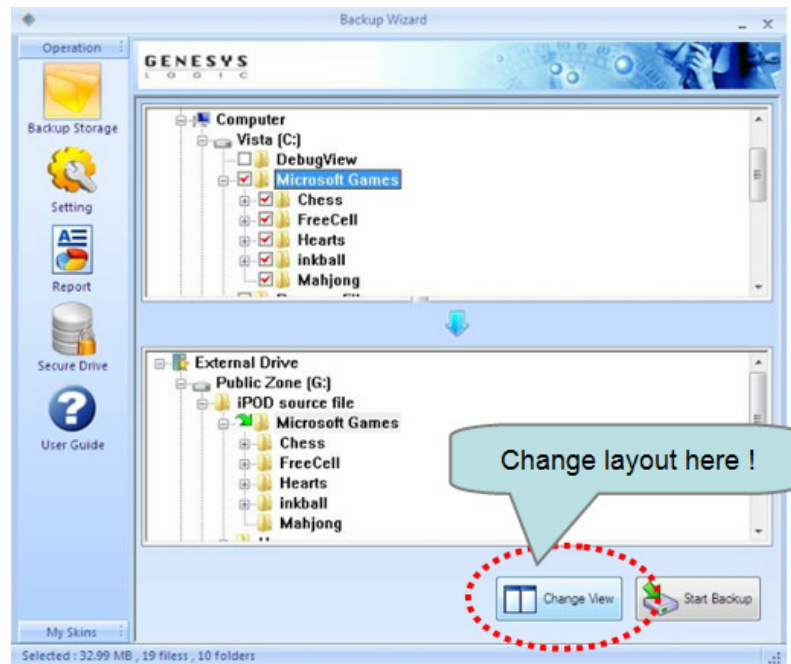


(6) Back up completed

A summary window will pop up after each backup job completes. It contains total size and number of files that has been successfully copied and verified. You can press “Report” button to check for more details.



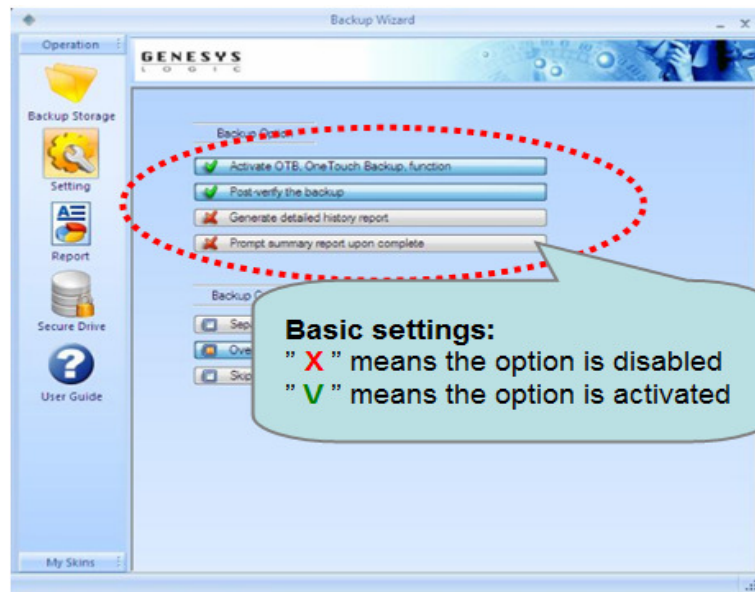
Note: User can change the layout of the backup page from vertical to horizontal by clicking the “Change View” button



● *Setting*

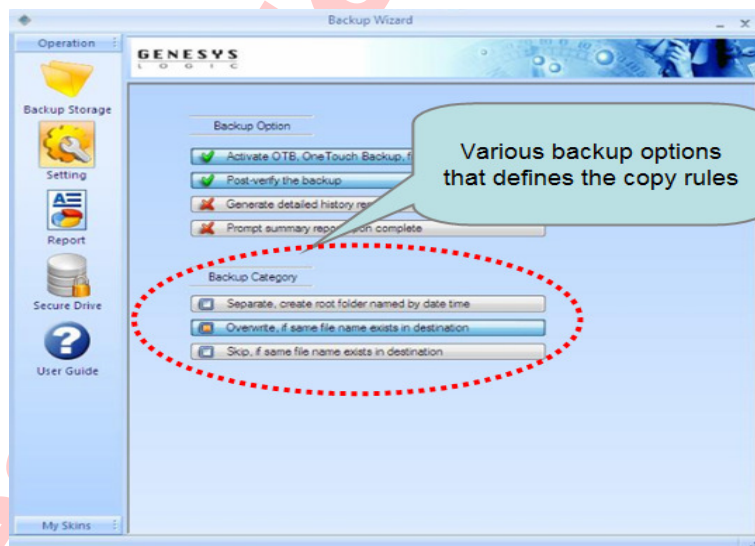
(1) Select basic configuration:

- ✓ **Activate / disable OTB function:** To prevent accidental operation caused by OTB button, you can disable the hardware one-button-copy (OTB) function as desired. However, once disabled OTB; you cannot use the hardware button for file backup.
- ✓ **Post-verify backup operation:** You can ask the application to compare the source files with the destination folder after each file backup. This step helps double check the completeness of backup job. The tradeoff is the verification may lengthen the time to finish each backup cycle.
- ✓ **Generate detailed history report:** When select this function, the application records all detailed operation of each backup job. The detailed report includes each file name that was copied, the source & destination folder, exact time of each file been copied...etc. In addition, the report also shows failed copy and reason of failure for corrections.
- ✓ **Prompt Summary report upon complete:** When activate this function, the application pops up a summary window after each backup job complete.

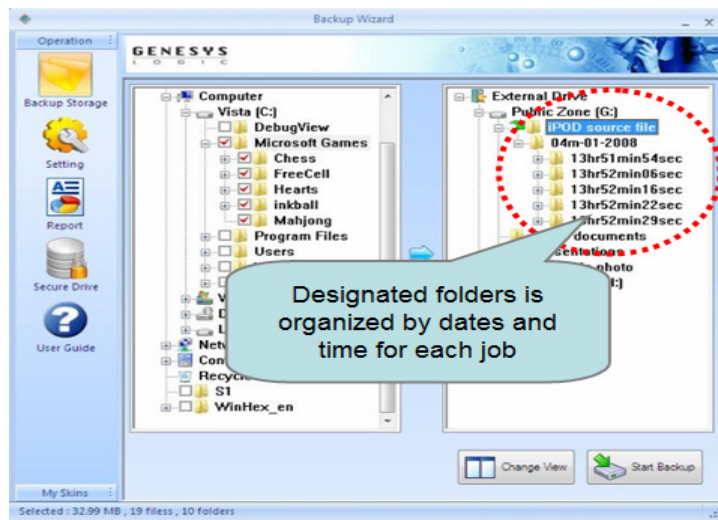


(2) Select different mode for your backup:

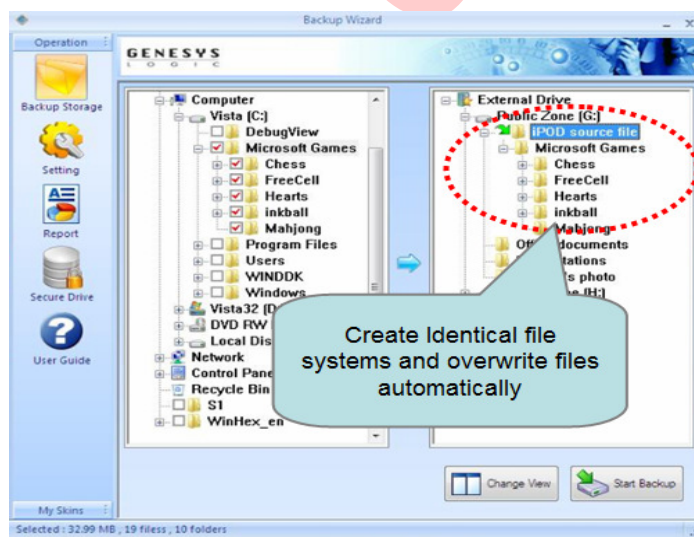
The application allows you change the rule of each backup job. You may choose only one rule for each backup. Each mode has its unique advantage corresponding to different your different needs.



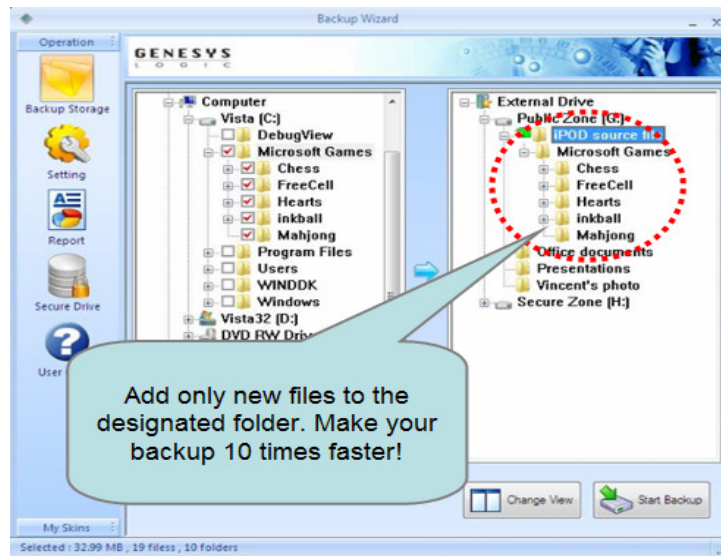
- ✓ **Separate Mode:** Each backup job is separately conducted and recorded according the date and time of each backup job. The application can only manage backup job once at a time. New backup job will not start until previous one completed. The chosen source files will be organized into separate folders according to date and specific time of each backup job.



- ✓ **Overwrite mode:** The application will create a mirror directory tree in the external hard drive and automatically overwrite files with identical file name. This mode is recommended for users that needs synchronize data in external hard drive but does not need to maintain a copy history.

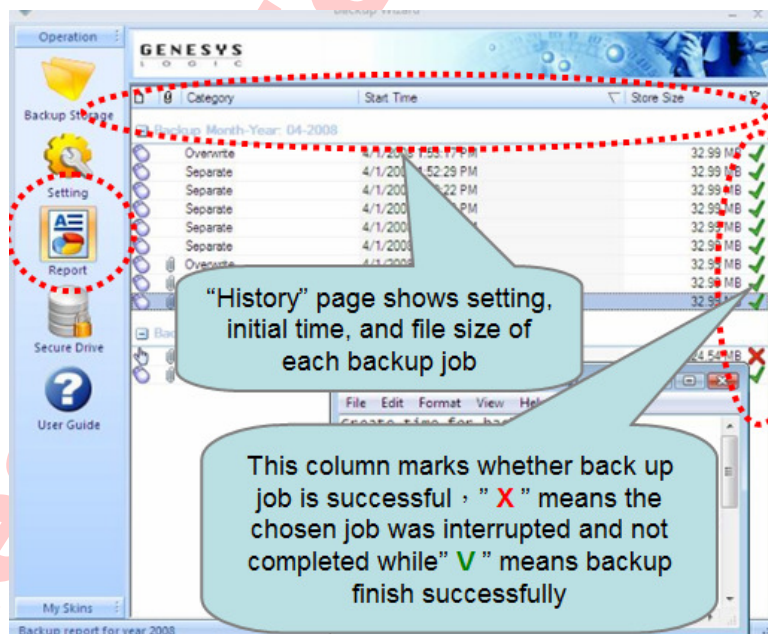


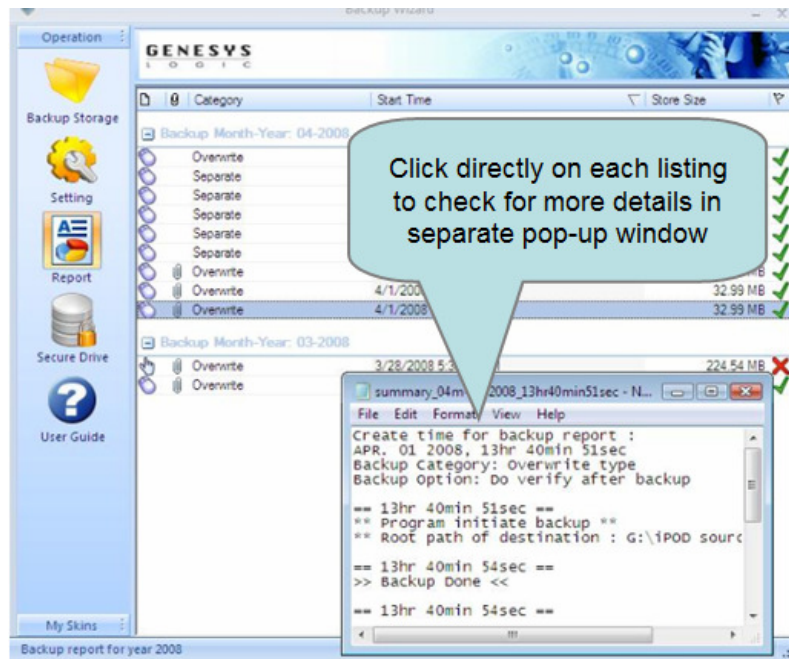
- ✓ **Incremental mode:** The application will automatically overlook files with identical file names for each backup job. This setting can dramatically reduce file saving time for each backup. This mode is recommended for users save massive read-only data in the external hard drive such as banking records or email histories.



- *History*

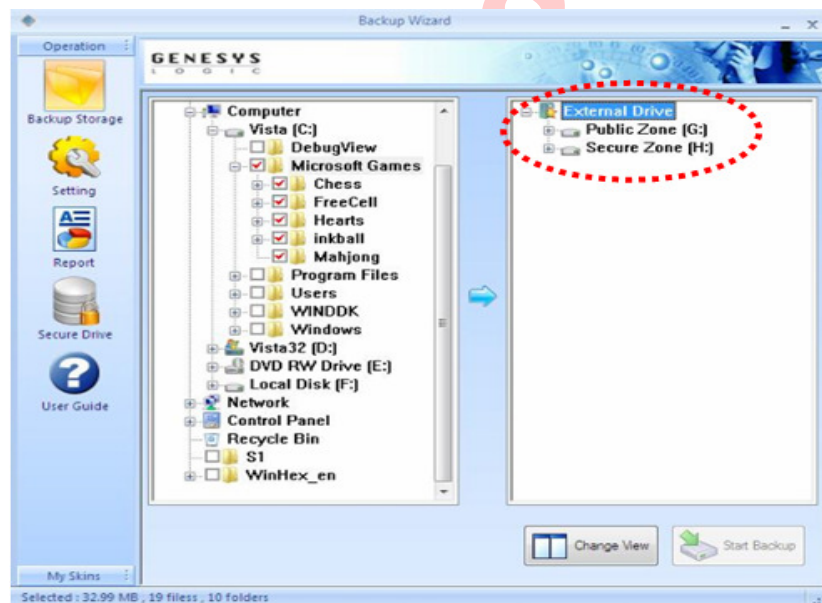
History page summarize the records of each backup job's setting, start time and selected files for user to backward tracking backup history. Each listing represents one backup record. Simply double click the listing to open the detail reports on separate window.





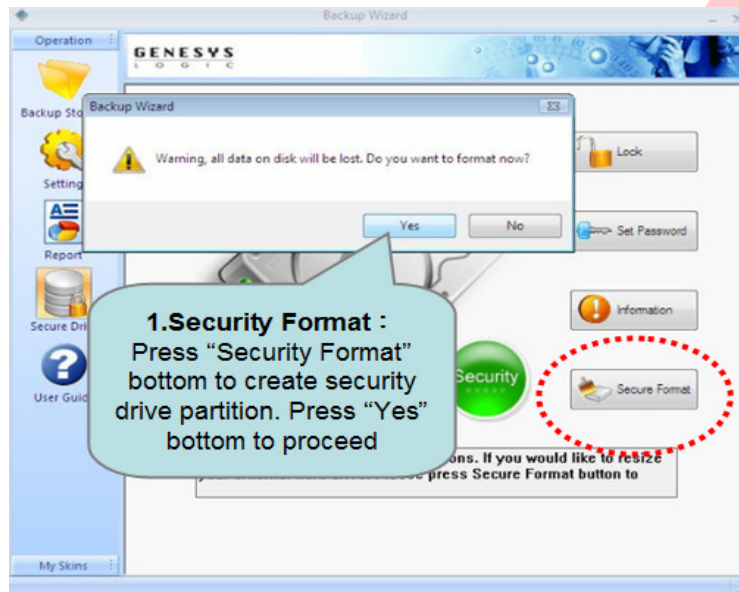
● **Security Drive ®**

Introduction: Security drive is smart file encryption software that provides a secured way to protect your confidential data. Through the easy-to-use interface, you can prevent your sensitive data to be reproduced or modified by unrelated third party. To begin, you simply format the external hard disk into two partitions: “public zone” & “Security zone”. Save all your confidential data in the security zone. Setup a private password that only yourself has access to then lockup the security zone. When lockup activated, security zone shift to hidden mode, under which all access to security zone is blocked, only the public zone can be accessed. The security drive can only be unlocked by input correct password to resume normal operation, such as data read/write and copy function.



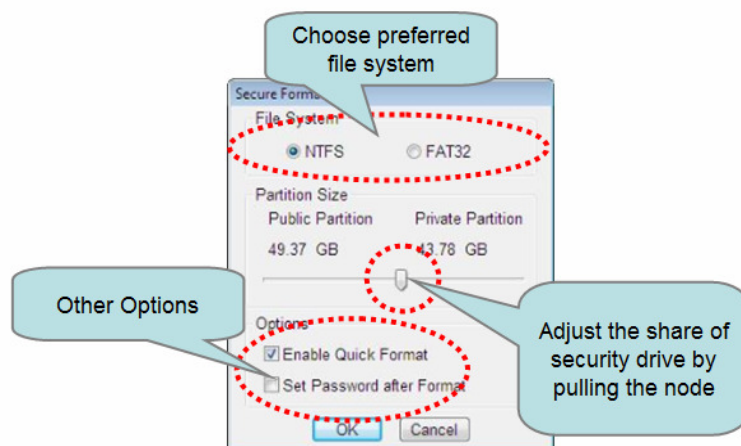
(1) Security format:

- ✓ **Start:** Press “Security Format” button to create security drive partition. A warning window will pop up to remind user that all files in the disk will be lost after hard drive formatting. Press “Yes” button to proceed

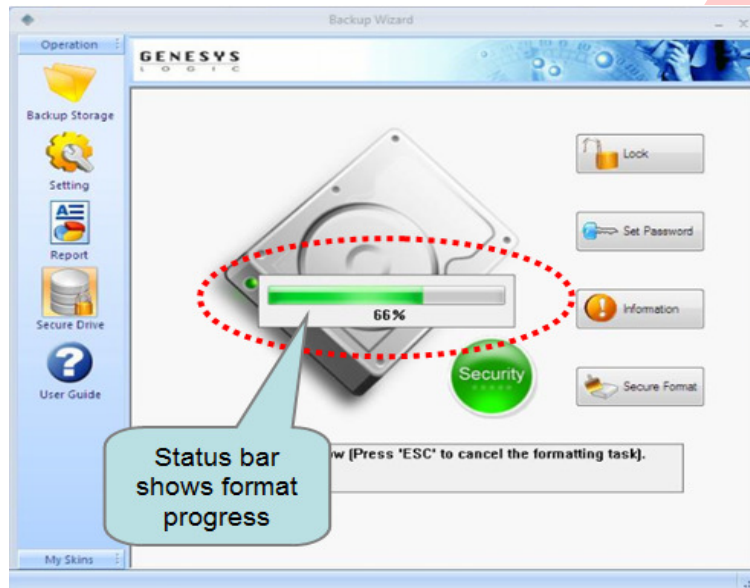


- ✓ **Configuration:** The partition setup window will emerge for user to select preferred file system type such as NTFS & FAT32. User can divide public and security partitions with desired proportion by pulling the node horizontally.

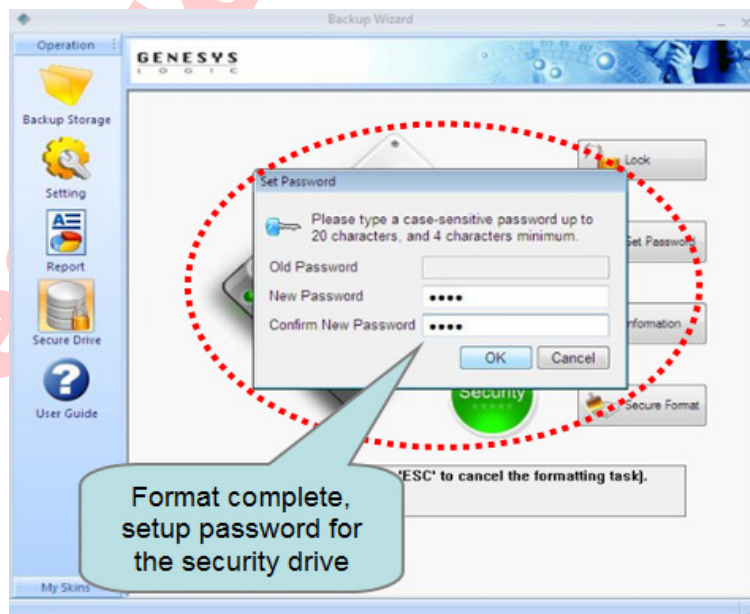
(Note: FAT32 format can only support 32GB or lower hard drive limited by Microsoft OS)



- ✓ **Format in progress:** After press “ok” button on the configuration page, the disk format automatically starts, and the status bar shows format progress by completed percentage.

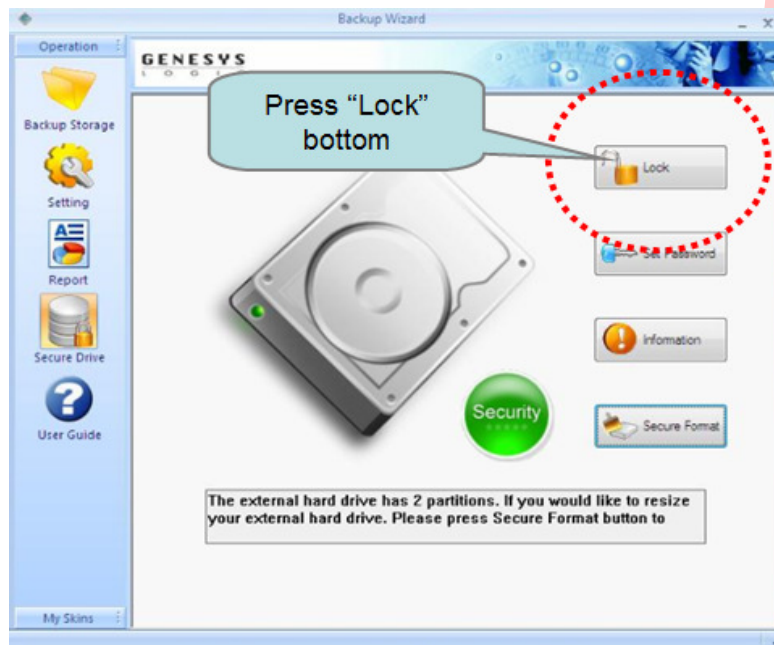


- ✓ **Format Complete:** After security format completes, a separate window will emerge for user to set password. The password can be set as alphabetical or numerical characters. The password length is limited to 4 ~ 20 characters.



(2) **Lock / Unlock**

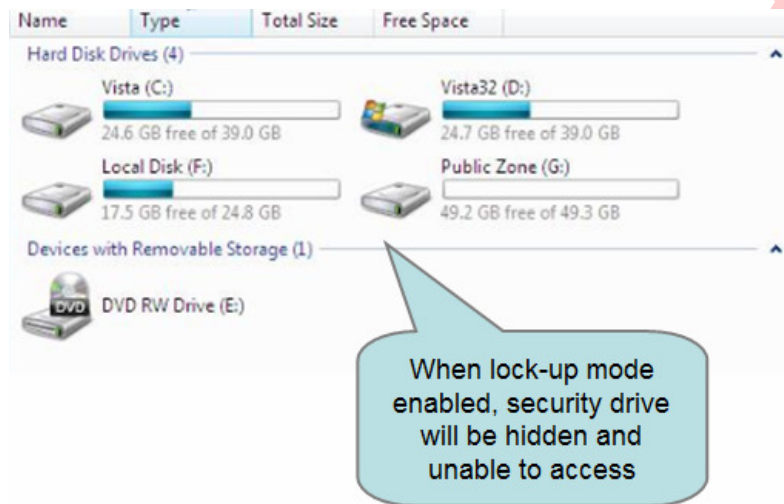
- ✓ **Lock:** Press “Lock” button to lock up the security partition.



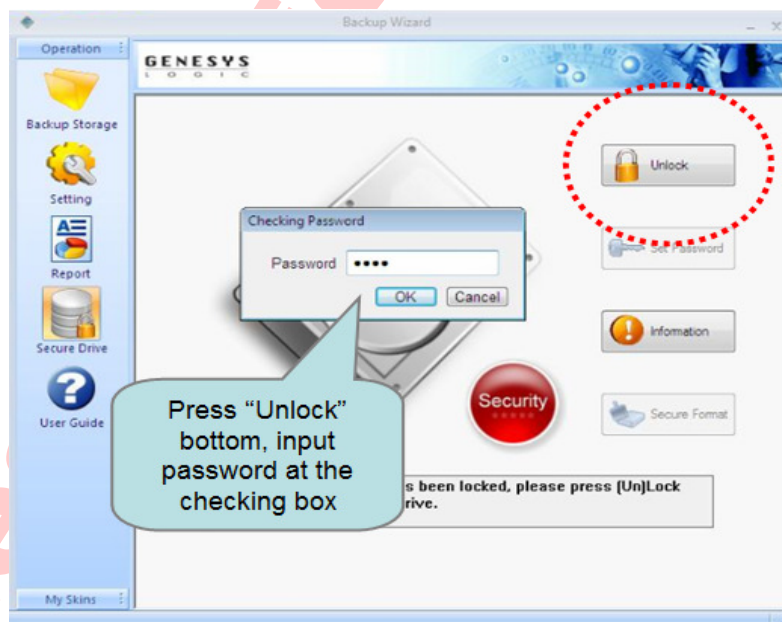
- ✓ **Lockup mode:** The color of security icon turns to red under lock-up mode. When lockup activated, security zone shift to hidden mode, under which all access to security zone is blocked, only the public zone can be accessed.



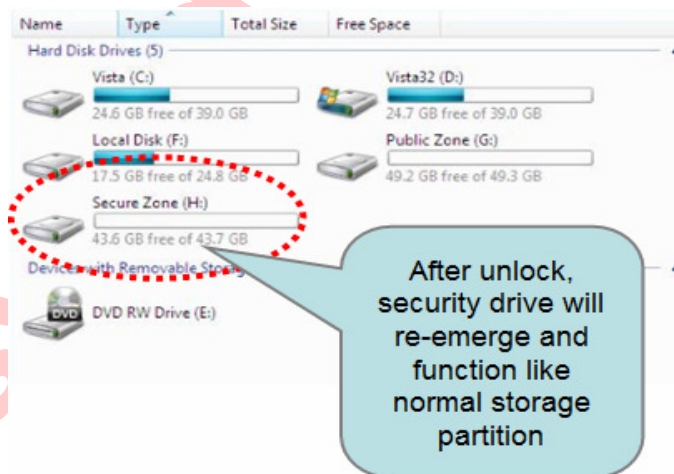
- ✓ **Lockup mode:** Under lockup mode, the icon of security drive will disappear in Windows file archive as well. Unrelated third party would not be aware of the existence of the Security partition.



- ✓ **Unlock:** Press “Unlock” button to exit lockup mode. Enter correct password in the pop-up checking box then press “ok” button.

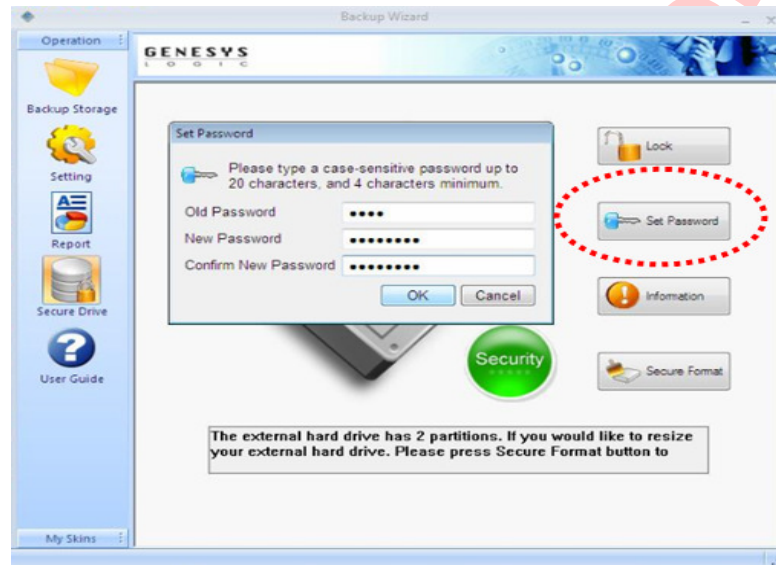


- ✓ **Normal mode:** When resume from lockup mode, security partition would act as normal partition. The icon of security drive will dynamically appears in Windows file archive, and read / write operation is allowed accordingly.



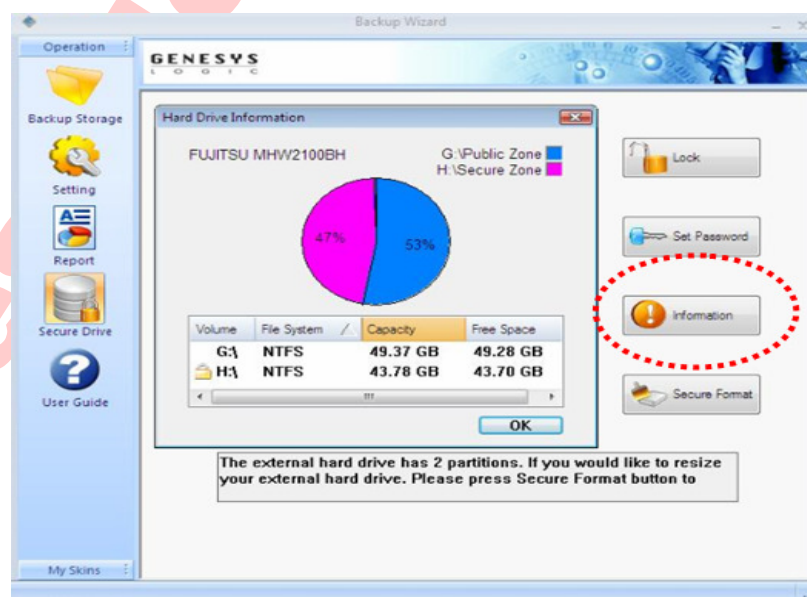
(3) Set Password:

User can set new password by pressing “Set Password” button. (Only under unlock mode) Input original password in the “Old Password” box, and input new password in the “New Password” and “Confirm New Password” box. Press “ok” button then the new password is effective automatically.



(4) Information:

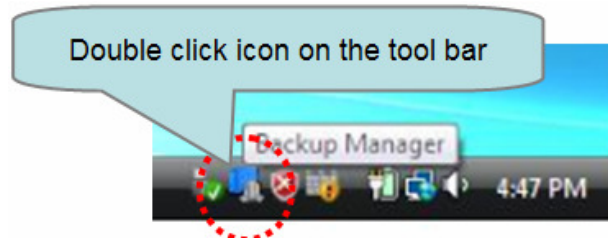
Press “Information” button to show drive’s capacity and free space.



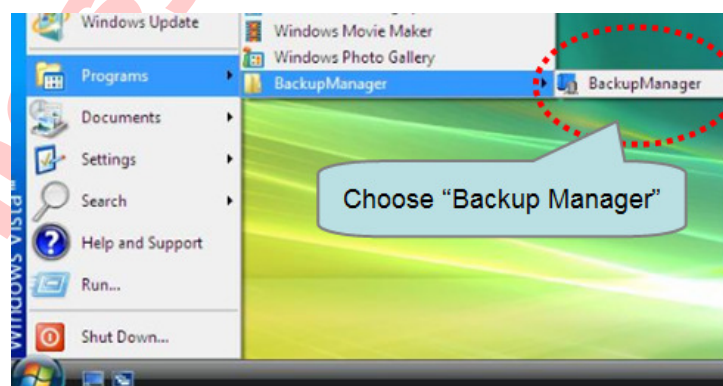
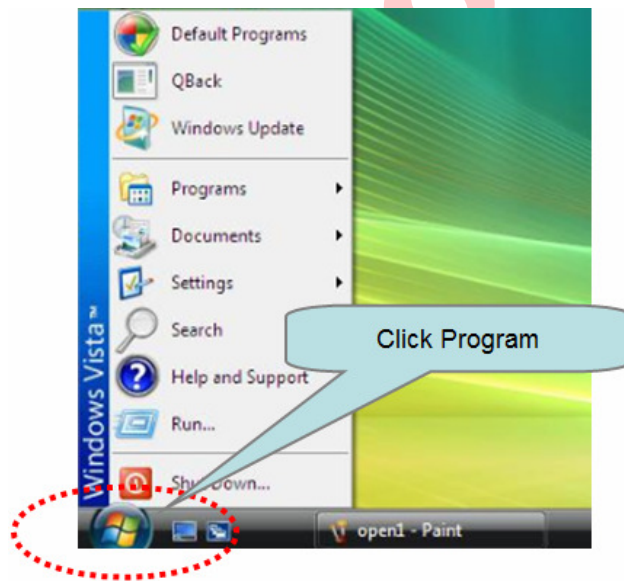
● **Others**

(1) **Turn-on the application**

- ✓ **Option 1:** Double click the icon on the right side of your windows tool bar.
The application window will automatically pop-up in few seconds.



- ✓ **Option 2:** Click “All Program” button on the start window. Choose “Backup Manager” to start application. The application window will pop up automatically.



(2) How to change Color?

You can choose your favorite color for the utility's outlook by clicking "Interface Color". There are 5 options for your selection and you can make the change any time during accessing the application.

